



DRE#00656930

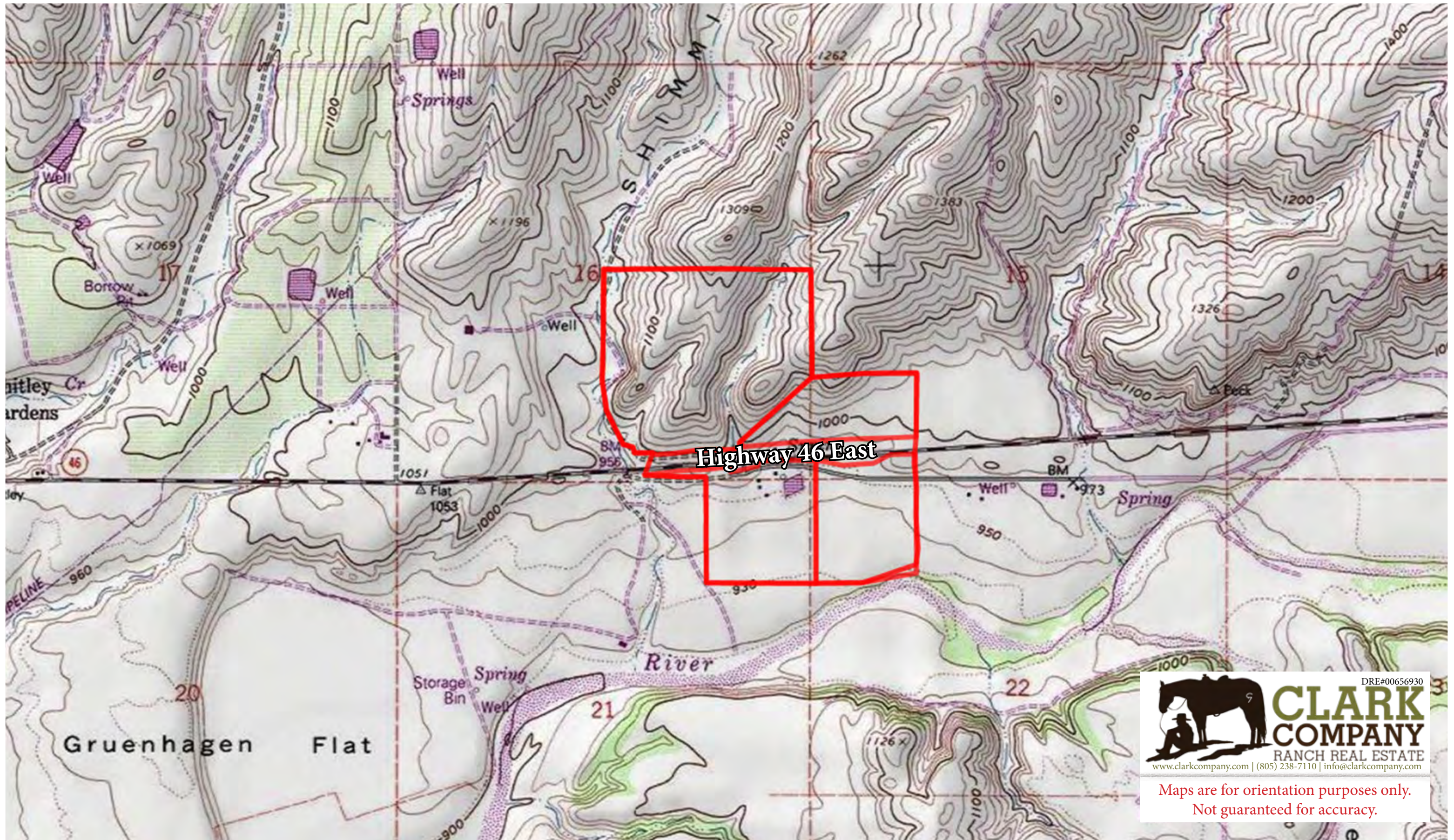


**CLARK
COMPANY**
RANCH REAL ESTATE
www.clarkcompany.com | (805) 238-7110 | info@clarkcompany.com

Maps are for orientation purposes only.
Not guaranteed for accuracy.

VINEYARD HILL

~ IRRIGATED GROUND ~ 13625 Highway 46 East | Paso Robles, California 93446



THE ENCLOSED INFORMATION HAS BEEN OBTAINED FROM SOURCES THAT WE DEEM RELIABLE; HOWEVER, IT IS NOT GUARANTEED BY CLARK COMPANY AND IS PRESENTED SUBJECT TO CORRECTIONS, ERRORS, PRIOR SALE, CHANGES OR WITHDRAWAL FROM THE MARKET WITHOUT NOTICE.

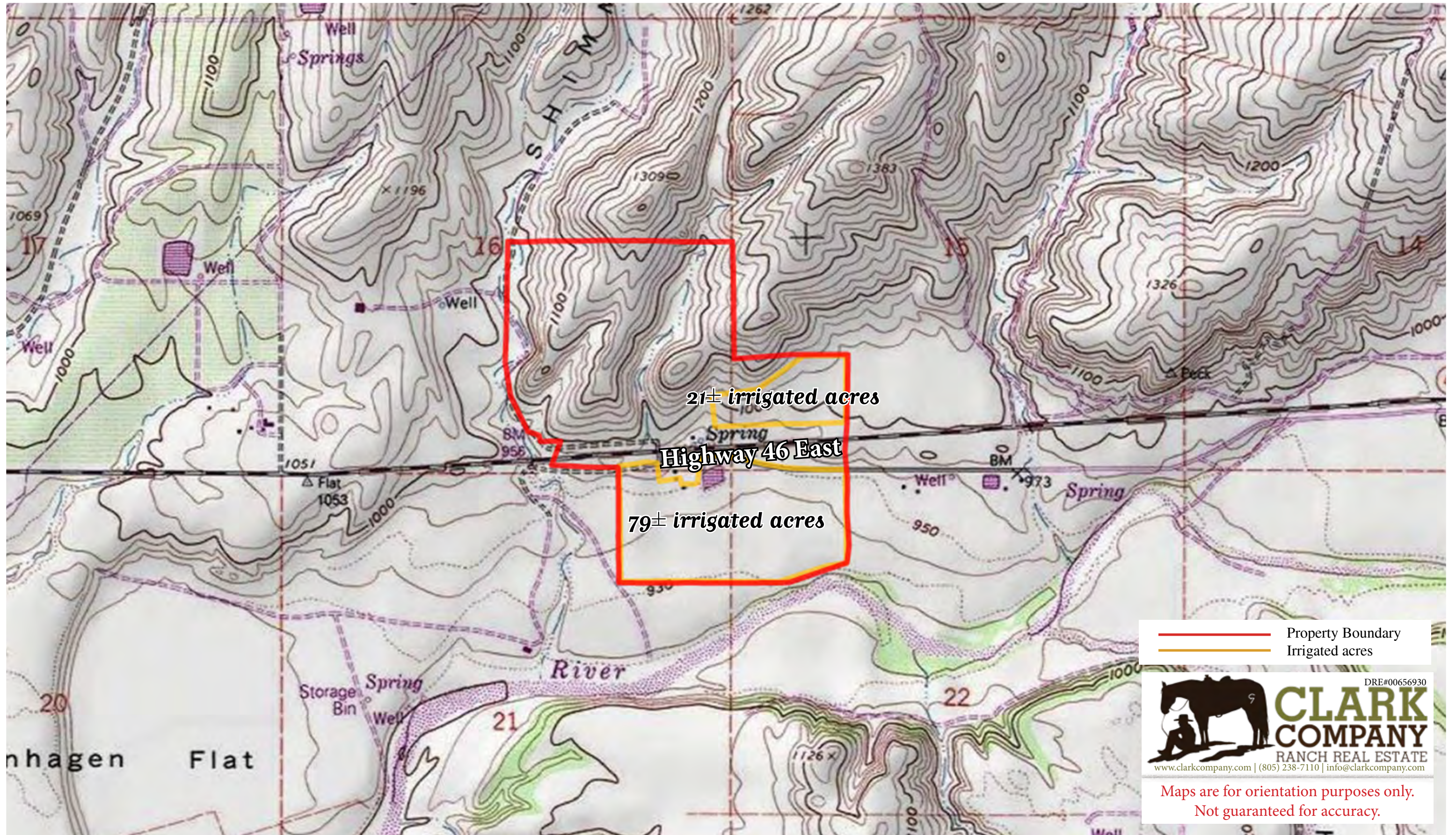


— Property Boundary
— Irrigated acres

DRE#00656930
CLARK COMPANY
RANCH REAL ESTATE
www.clarkcompany.com | (805) 238-7110 | info@clarkcompany.com

Maps are for orientation purposes only.
Not guaranteed for accuracy.

VINEYARD HILL
~ IRRIGATED GROUND ~ 13625 Highway 46 East | Paso Robles, California 93446



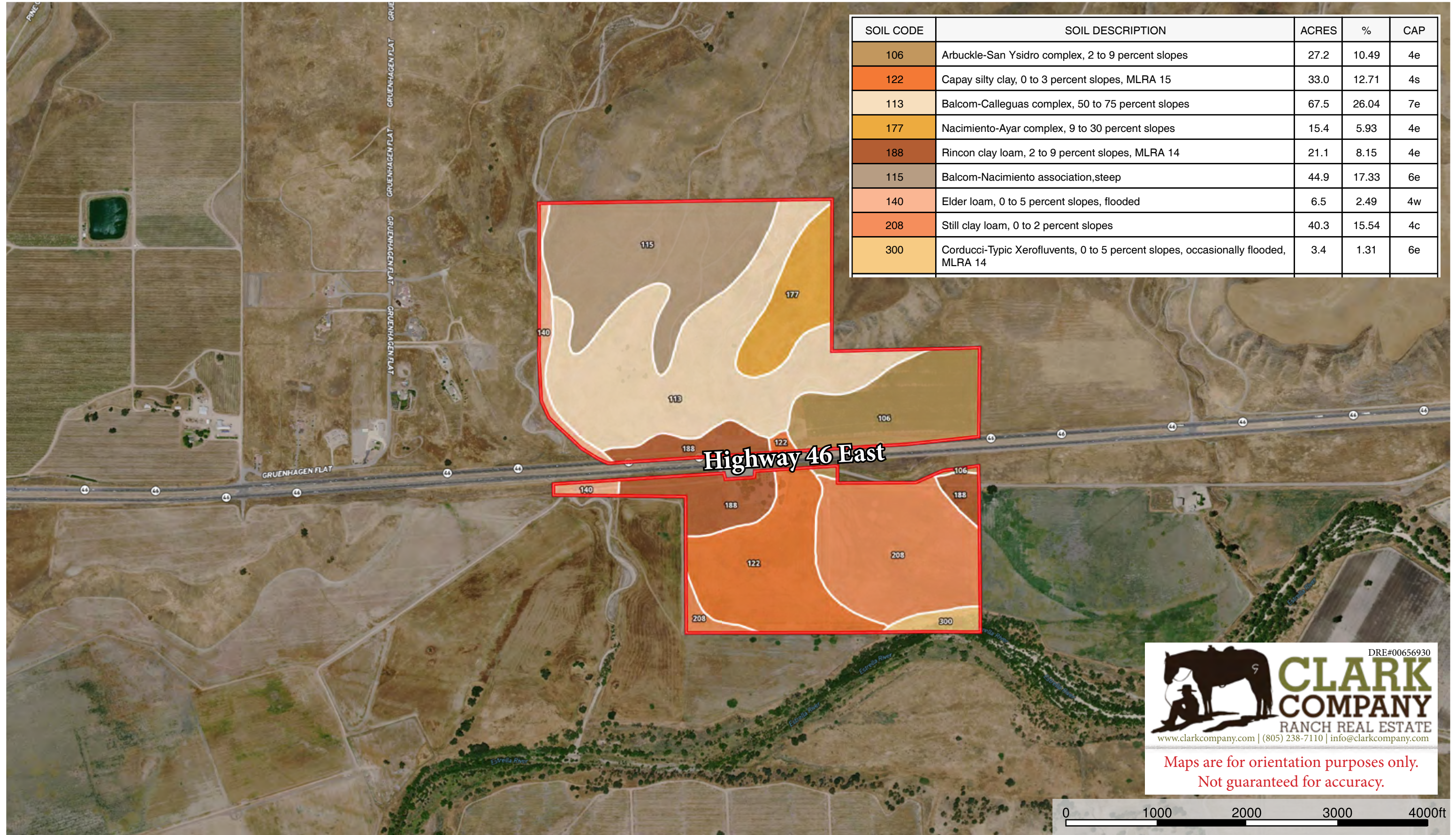
— Property Boundary
— Irrigated acres

DRE#00656930
**CLARK COMPANY**
RANCH REAL ESTATE
www.clarkcompany.com | (805) 238-7110 | info@clarkcompany.com

Maps are for orientation purposes only.
Not guaranteed for accuracy.

THE ENCLOSED INFORMATION HAS BEEN OBTAINED FROM SOURCES THAT WE DEEM RELIABLE; HOWEVER, IT IS NOT GUARANTEED BY CLARK COMPANY AND IS PRESENTED SUBJECT TO CORRECTIONS, ERRORS, PRIOR SALE, CHANGES OR WITHDRAWAL FROM THE MARKET WITHOUT NOTICE.

VINEYARD HILL
 ~ IRRIGATED GROUND ~ 13625 Highway 46 East | Paso Robles, California 93446

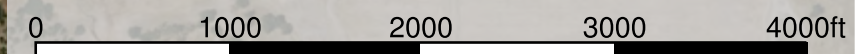


SOIL CODE	SOIL DESCRIPTION	ACRES	%	CAP
106	Arbuckle-San Ysidro complex, 2 to 9 percent slopes	27.2	10.49	4e
122	Capay silty clay, 0 to 3 percent slopes, MLRA 15	33.0	12.71	4s
113	Balcom-Calleguas complex, 50 to 75 percent slopes	67.5	26.04	7e
177	Nacimiento-Ayar complex, 9 to 30 percent slopes	15.4	5.93	4e
188	Rincon clay loam, 2 to 9 percent slopes, MLRA 14	21.1	8.15	4e
115	Balcom-Nacimiento association, steep	44.9	17.33	6e
140	Elder loam, 0 to 5 percent slopes, flooded	6.5	2.49	4w
208	Still clay loam, 0 to 2 percent slopes	40.3	15.54	4c
300	Corducci-Typic Xerofluvents, 0 to 5 percent slopes, occasionally flooded, MLRA 14	3.4	1.31	6e

DRE#00656930

CLARK COMPANY
 RANCH REAL ESTATE
 www.clarkcompany.com | (805) 238-7110 | info@clarkcompany.com

Maps are for orientation purposes only.
 Not guaranteed for accuracy.



THE ENCLOSED INFORMATION HAS BEEN OBTAINED FROM SOURCES THAT WE DEEM RELIABLE; HOWEVER, IT IS NOT GUARANTEED BY CLARK COMPANY AND IS PRESENTED SUBJECT TO CORRECTIONS, ERRORS, PRIOR SALE, CHANGES OR WITHDRAWAL FROM THE MARKET WITHOUT NOTICE.